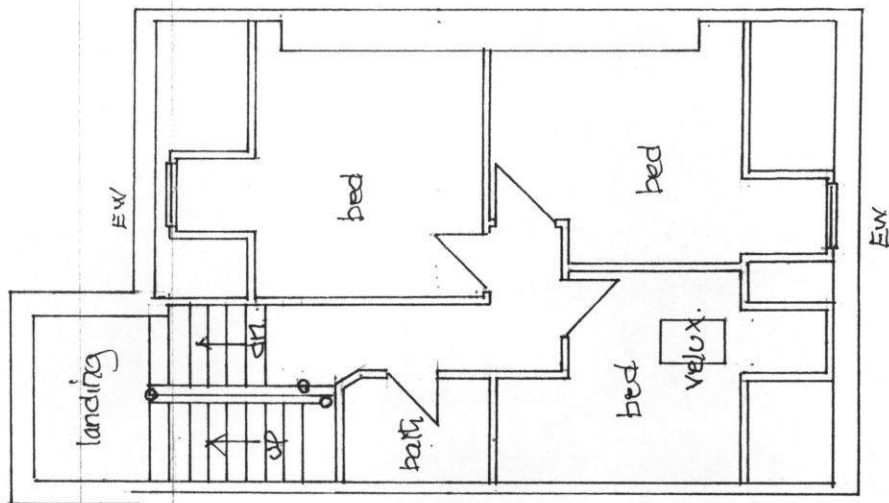


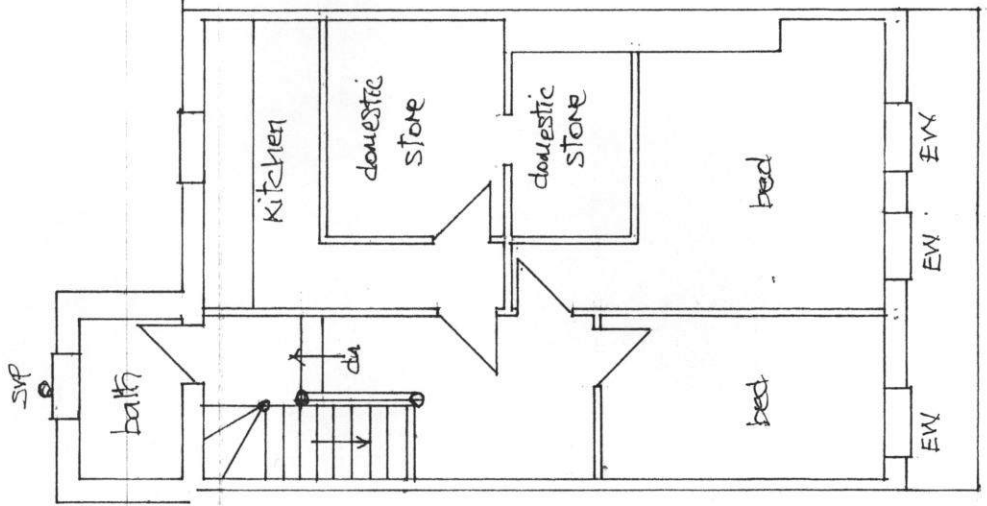
122-124. DEAN ROAD. SOUTH SHIELDS. TYNE & WEAR. NE33 4AW.

EXISTING PLANS.

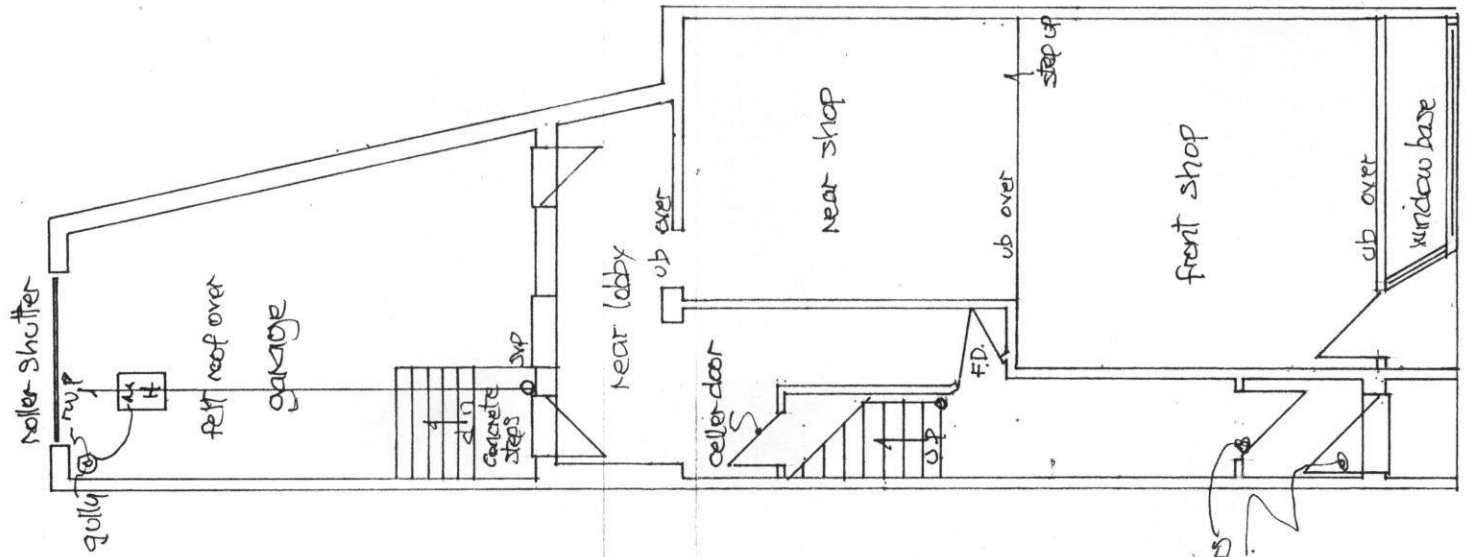
SCALE 1-100.



second floor plan.



first floor plan



ground floor plan

SOUTH TYNESIDE COUNCIL  
29 APR 2015  
AREA PLANNING

ST0295/15 rUL

PLAN

the cellar door leads to the basement with access retained for inspection and maintenance purposes.

Windows annotated with the motif EW have opening sashes of suitable size to be available as means of escape in case of fire.

the first & 2nd floors were let as a maisonette and was registered with local authority as a H.I.M.O.

The maisonette is fully equipped with smoke alarms located in every room and circulation space all interlinked and connected to the fire alarm panel on the ground floor all in accordance with B.S.5839.

Fire exit signs are posted on the rear door above the near concrete steps all in accordance with B.S.5499 Pt 1 1984